

ONSTAGE

★★★★★
NAXOS[®]





ACTION
COVER
VISION
FLASH

ONSTAGE





COVER 20x50 . ACTION 20x50 . FASCIA OPEN GRIGIO 20x50
PAVIMENTO MATERIA BLACK 45x45

COVER + ACTION

ONSTAGE





COVER 20x50 . ACTION 20x50 . FASCIA NATURAL GRIGIO 20x50
LISTELLO NATURAL ANTRACITE 6x50
PAVIMENTO MATERIA BLACK 45x45

COVER + ACTION

ONSTAGE

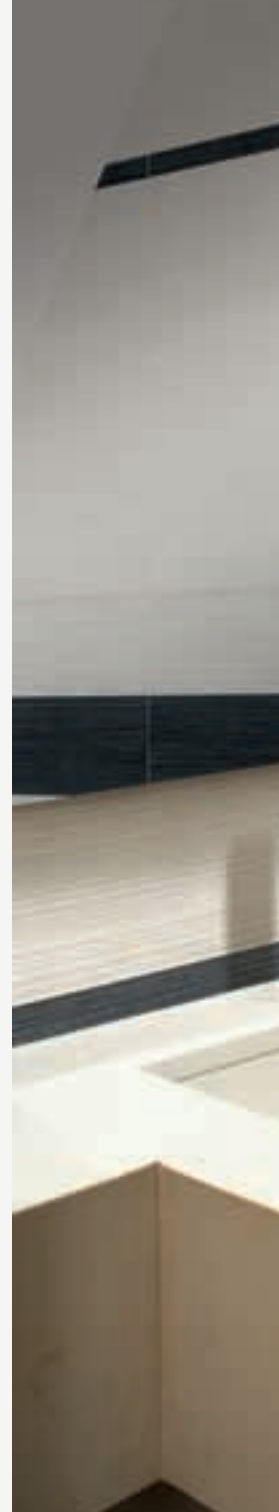


VISION 20x50 . FASCIA LIVING BLACK 20x50 . FASCIA LIVING BIANCO 20x50 . LISTELLO LIVING BLACK 4,5x50

VISION

ONSTAGE

8









FLASH 20x50 . FASCIA NATURAL BEIGE 20x50 . LISTELLO NATURAL BROWN 6x50
FASCIA LIVING BROWN 20x50 . PAVIMENTO MATERIA BROWN 45x45

FLASH

ONSTAGE

ONSTAGE 20x50



53486
VISION . 20x50



53489
FLASH . 20x50



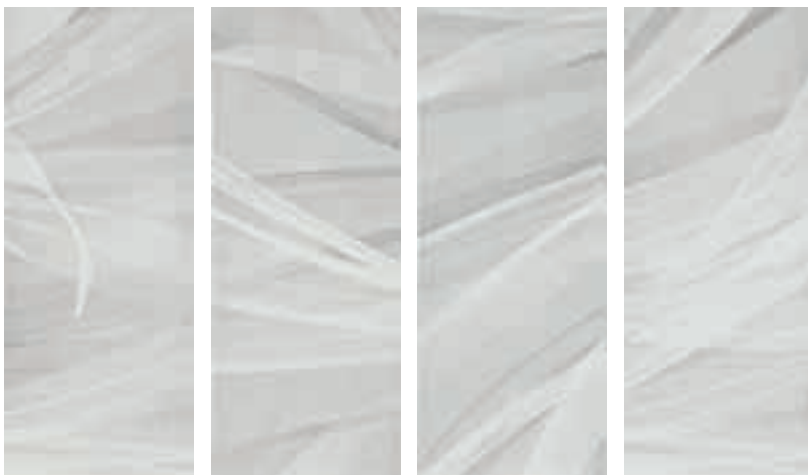
53793
FASCIA OPEN BEIGE . 20x50
(12 IMMAGINI MULTIPLE - 12 MULTIPLE IMAGES - 12 PLUSIEURS IMAGES
12 MEHRERE BILDER - 12 MÚLTIPLES IMÁGENES)



53488
COVER . 20x50



52968
ACTION . 20x50



53485
FASCIA OPEN GRIGIO . 20x50
(12 IMMAGINI MULTIPLE - 12 MULTIPLE IMAGES - 12 PLUSIEURS IMAGES
12 MEHRERE BILDER - 12 MÚLTIPLES IMÁGENES)



54063
FASCIA
NATURAL BEIGE
20x50



54654
LISTELLO
NATURAL BROWN
6x50



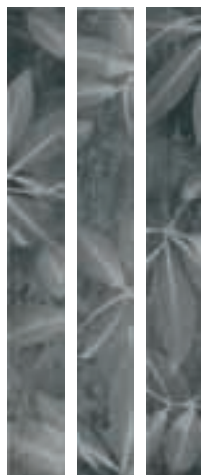
54070
FASCIA
LIVING BROWN
20x50



54066
LISTELLO
LIVING BROWN
4,5x50



54064
FASCIA
NATURAL GRIGIO
20x50



54653
LISTELLO
NATURAL ANTRACITE
6x50



54071
FASCIA
LIVING BLACK
20x50



54068
LISTELLO
LIVING BLACK
4,5x50



54069
FASCIA
LIVING BIANCO
20x50



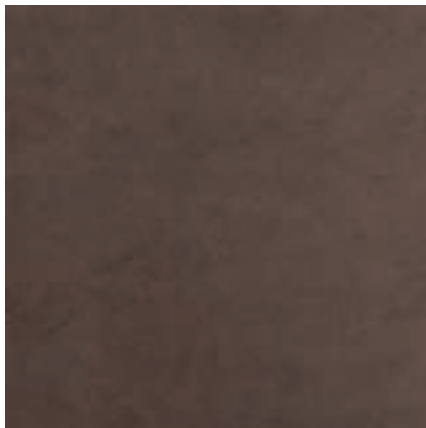
54065
LISTELLO
LIVING BIANCO
4,5x50

PAVIMENTI . FLOOR TILES . SOLS . BODENFLIESEN . PAVIMENTOS .

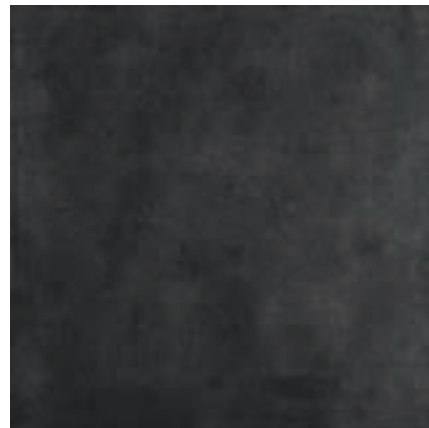
GRES FINE PORCELLANATO . FINE PORCELAIN STONWARE . GRES CERAME FIN . FEINSTEINZEUG . GRES FINO PORCELÁNICO



50471
MATERIA BEIGE . 45x45



47273
MATERIA BROWN . 45x45



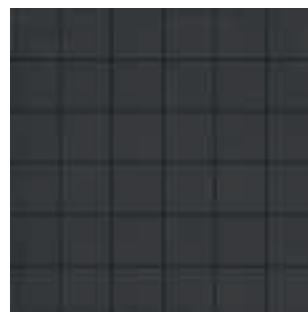
47275
MATERIA BLACK . 45x45



53990
MOSAICO
MATERIA BEIGE . 32,5x32,5
(36 TESSERE)



47914
MOSAICO
MATERIA BROWN . 32,5x32,5
(36 TESSERE)



47916
MOSAICO
MATERIA BLACK . 32,5x32,5
(36 TESSERE)

ONSTAGE

★★★★★
NAXOS[®]

FINCIBEC S.p.A.

Uffici Commerciali, Stabilimento:
Strada Statale 569, 169 - 41014 Solignano (MO) Italy

Magazzino:

Strada Statale 569, 187 - 41014 Solignano (MO) Italy
Tel. +39 059 748.811 - Fax +39 059 797.376
www.naxos-ceramica.it - info@naxos-ceramica.it

Amministrazione:

Via Valle D'Aosta, 47 - 41049 Sassuolo (MO) Italia
Tel. +39 0536 861.300 - Fax. +39 0536 861.351
www.fincibec.it - info@fincibec.it

GRUPPO FIRE - Fire S.R.L.



Ceramic Tiles of Italy